



# OUTDOOR PRODUCTS

See the World in a New Way



## ABOUT HIKMICRO

HIKMICRO is a leading provider of thermal imaging equipment and solutions. Specializing in SoC and MEMS design, development, and manufacturing, the company offers thermal detectors, cores, modules, cameras and total solutions to the global market, serving customers in more than 100 countries and regions.

## 2008

### Started

investing in thermal technology

## 2010

Released

**the first thermal network camera**

## 2016

### HIKMICRO was founded

Released a full portfolio of thermal security products with fully optimized imaging, algorithms and intelligence



## 2018

### Released 17 $\mu\text{m}$ 384x288 / 640x512 detectors

Released outdoor and handheld thermography products

## 2019

### Released 17 $\mu\text{m}$ 160x120 detectors

Released 160\*120 series products to meet the needs of niche market, such as short-range perimeter defense and indoor fire prevention

## 2020

### Released 12 $\mu\text{m}$ 256x192 / 384x288 / 640x512 detectors

Powerful VOx 12 $\mu\text{m}$  imaging sensor presents clear and detailed pictures, and offers new experience in observation.



## 2021

### Released 12 $\mu\text{m}$ 1280x1024 detectors

In-house 12 $\mu\text{m}$  detectors were widely used on thermal products.

### Innovation leader of bi-spectrum monocular in the sector


Combine thermal and night vision images, the bi-spectrum monocular meets the needs of quick research and clear target identification.


## 2022


### Released 384x288/640x512 high sensitivity detectors with NETD < 20mK


Released digital night vision rifle scope with the unique 1/1.8-inch sensor and 3D DNR image algorithm

## Follow us

 HIKMICRO Outdoor

 hikmicro\_outdoor

 HIKMICRO

 HIKMICRO Outdoor

# TABLE OF CONTENTS

## Mobile App

HIKMICRO Sight ..... 5

## Thermal Monocular

LYNX & LYNX Pro ..... 7

OWL ..... 10

**NEW** FALCON ..... 12

GRYPHON & GRYPHON LRF ..... 16

## Thermal Scope

THUNDER & THUNDER Pro ..... 20

**NEW** STELLAR ..... 24

PANTHER LRF ..... 28

## Thermal Clip-on

THUNDER & THUNDER Pro ..... 32

## Thermal Binocular

**NEW** RAPTOR ..... 36

## Night Vision Scope

**NEW** ALPEX ..... 38

**NEW** CHEETAH ..... 42

## Night Vision Clip-on

**NEW** CHEETAH ..... 44

**Accessory** ..... 46



Download on the  
App Store

GET IT ON  
Google Play



Mobile App

# HIKMICRO Sight

[www.alldataee.com](http://www.alldataee.com)





## Firmware Upgrade

The App automatically detects the firmware update information when you connect your device with it. Simply click on the reminder and get updated instantly.



## Remote Control

HIKMICRO Sight unlocks the full potential of your device by granting users total control of main parameters while enjoying an HD live view of the device, helping you operate the device in an easier way.



## Real-time Screen Sharing

View the real-time image of your device on the smartphone. Connect one device with multiple phones that enables your team view the image on their own HIKMICRO Sight. Rotate the screen so that you can see the Sight in portrait or landscape mode.



## Browse and Download Exciting Moments

Browse the images and footage in your thermal device and APP whenever you want, sharing these thrilling moments to your social medias with 1-Tap.



## HIKMICRO Academy

Aim to tell you how to use your products better with various products videos and documents.



## Online Service

If you have any question about products, please contact us here and we'll reply you timely.

LC06 · L15 · LE10 · LE15 · LH15 · LH19 · LH25



Thermal Monocular

# LYNX & LYNX Pro

17 $\mu$ m  
LYNX

12 $\mu$ m  
LYNX Pro

[www.alldataee.com](http://www.alldataee.com)



## Extended Operating Time

The design of low power consumption makes the continuous operating time up to 10 hours.



## Advanced VOx 12μm Imaging Sensor

For the powerful VOx 12μm imaging sensor with NETD<35mK ensure the perfect distinction of the target and present clear and detailed pictures even in complete darkness.



## Variable Digital Zoom

Digital zoom up to 8x enables better focus on small target from a greater distance.



## Hotspot for Mobile APP

Integrated hotspot module makes HIKMICRO Sight app as a second display. Users can remote control, adjust settings, upgrade firmware. Enabling the captured image being easily uploaded to social media.



**Compact Size,  
Easy to Carry**



## Video and Snapshot

Onboard 16GB memory offers storage space for the snapshots and video clips.



## Manual Focus

Control the image, observe the target clearly at greater distances.



LC06/L15/LE10/LE15

LH19/LH25

	LYNX		LYNX Pro				
	LC06	L15	LE10	LE15	LH15	LH19	LH25
Sensor	160×120, 17 μm	384×288, 17 μm	256×192, 12 μm		384×288, 12 μm		
Focal Length	6.2 mm, F1.1	15 mm, F1.0	10 mm, F1.0	15 mm, F1.0	15 mm, F1.0	19 mm, F1.0	25 mm, F1.0
Magnification	0.6 - 2.4, 4x	0.6 - 4.8, 8x	1.0 - 8.0, 8x	1.5 - 12.0, 8x	1.5 - 12.0, 8x	1.9 - 15.2, 8x	2.5 - 20.0, 8x
FOV	24.7°×18.7°	24.6°×18.5°	18.0°×13.6°	11.7°×8.8°	17.5°×13.1°	13.8°×10.4°	10.5°×7.9°
Frame Rate	25Hz	50Hz	25Hz		50Hz		
Manual Focus	No		No		Yes		
Micro Display	0.2 inch, LCOS, 720 × 540		0.2 inch, LCOS, 720 × 540		0.4-inch, LCOS, 1280×960		
Operating Time	10 h	7 h	8 h		7.5 h		
Detection Range	250 m	550 m	500 m	750 m	750 m	900 m	1200 m
Operating Temp.	-20°C to 55°C (-4°F to 131°F)		-20°C to 55°C (-4°F to 131°F)				
Weight	250 g	270 g	260 g	280 g	290 g	300 g	310 g

OH25 · OH35 · QQ35



Thermal Monocular

OWL

## Vivid and Detailed Image & Smooth Video

OWL Series equipped with an up to 640x512 pixels thermal sensor (NETD<35mK) and large aperture F1.0 lens, which provide contrasted, sharp and clear image. 50 fps full frame delivers smooth video of dynamic scenes.

## Reliable and Durable Even in Extreme Environment

OWL Series benefits from high sensitivity thermal imaging sensor, robust structural design, excellent environmental adaptability OLED display, and is fit for hazardous environment, even can work in low temperature of -30 degrees.



## Up to 1300m Detection Range

With high-sensitivity sensor and long-focus objective lens, OWL series can detect a 1.7m target at a distance up to 1300m.



## Variable Digital Zoom

Digital zoom up to 8x enables better focus on small target from a greater distance.



## Manual Focus

Control the image, observe the target clearly at greater distances.

	OH25	OH35	OQ35
Sensor	384×288, 17 μm		640×512, 17 μm
Focal Length	25 mm, F1.0	35 mm, F1.0	35 mm, F1.0
Magnification	1.7 - 13.6, 8x	2.3 - 18.4, 8x	1.4 - 11.2, 8x
FOV	14.9°×11.2°	10.7°×8.0°	17.7°×14.2°
Frame Rate	50Hz		
Manual Focus	No	Yes	
Micro Display	0.39 inch, OLED, 1024×768		
Operating Time	7 h		5.5 h
Detection Range	900 m	1300 m	1300 m
Operating Temp.	-30°C to 55°C (-22°F to 131°F)		
Weight	460 g	500 g	500 g

FH25 · FH35 · FQ35 · FQ50



**NEW**

Thermal Monocular

**FALCON**

HIGH  
SENSITIVITY

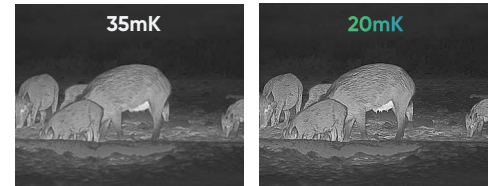
## Ultra Clear Image. Impressive Detail Recognition

The higher sensitivity in combination with high definition sensor and larger aperture optics provides the best quality, most detailed & high-contrast, informative image in all weather conditions.



### ◆ Extremely High Thermal Sensitivity, NETD<20mK

High thermal sensitivity ensures perfect detail recognition even in the hardest weather conditions when the object and background is with minimal temperature difference. The smallest details of objects and backgrounds can be identified easily and clearly, i.e. the animal hair, physical characteristics of male, female or pregnant animals, branches, leaves etc.



### ◆ High Definition Thermal Sensor, up to 640x512 @12μm

Equipped with 12μm high-end thermal sensor and up to 640x512 pixel resolution offer an excellent temperature resolution to ensure the thermal image significantly sharp and richly contrasted.

### ◆ Super Large Aperture f/0.9 lens, 19% Improvement

Compared with the f/1.0 aperture, the capturing of temperature radiation level is increased by 19%. The larger the aperture is, the more infrared radiation can be captured, and the image will be much clearer.





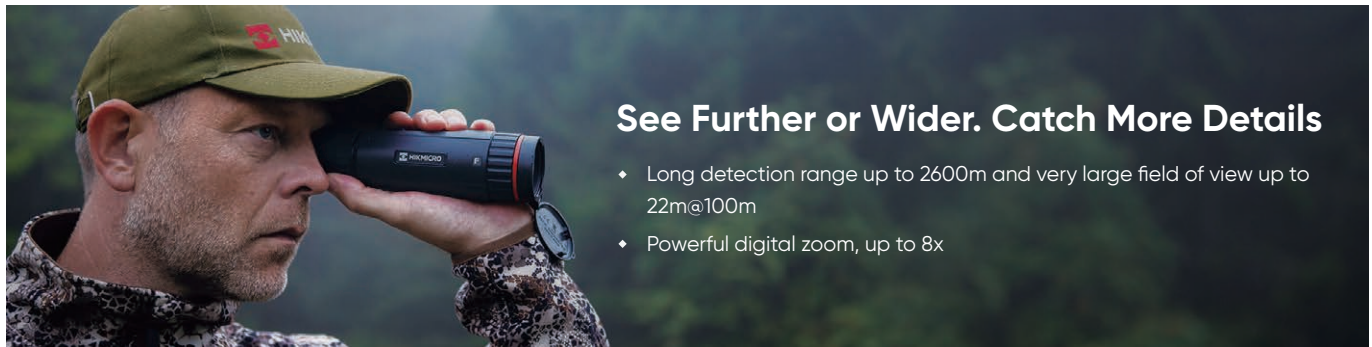
## Image Pro, Enhanced Self-developed Image Processing Algorithm

Image Pro, HIKMICRO's self-developed image processing algorithm, ensures the maximum digital image optimization depending on the purposes and conditions of observation and provides high-quality rendering of both target objects and background.



## Significantly Improved Design. Exceptional Ease-to-use

- ◆ Ergonomic cylindrical shape design for better operation experience
- ◆ Perfect component design for intuitive operation and ease-to-use
- ◆ Robust magnesium housing and lens coating material for long-time use



### See Further or Wider. Catch More Details

- ◆ Long detection range up to 2600m and very large field of view up to 22m@100m
- ◆ Powerful digital zoom, up to 8x

## Replaceable and Rechargeable High Capacity Battery, Non-stop Observation

On one battery pack the device can run up to 7 hours. Another spare one provides enough power for non-stop operation. Besides, any ordinary power bank connected via a Type-C interface can be used as an external power supply.



	FH25	FH35	FQ35	FQ50
Thermal Sensor	384×288 @ 12 μm		640×512, 12 μm	
NETD	<20mK(@25°C,F#=1.0)			
Objective Lens	25 mm, F1.0	35 mm, F1.0	35 mm, F1.0	50 mm, F0.9
Optical Magnification	2.17	3.03	1.82	2.6
Digital Zoom	1×, 2×, 4×, 8×			
Field of View(H × V), Degrees / m @100m	10.5°×7.9° / 18.4m×13.8m	7.53°×5.65° / 13.2m×9.9m	12.54°×10.05° / 22.0m×17.6m	8.75°×7.0° / 15.3m×12.2m
Detection range	1200 m	1800 m	1800 m	2600 m
Display	0.39-inch, OLED, 1024 × 768			
Battery Type	Replaceable and rechargeable Li-ion battery			
Operating time	7 h	7 h	5 h	5 h
Work Temperature/ Humidity	-30°C - +55°C (-22°F - +131°F); Humidity: 90% or Less			
Protection Level	IP67	IP67	IP67	IP67
Dimension	187.7 mm × 58.3mm × 65.2 mm ( 7.39"×2.29"×2.57" )			200.4 mm × 78mm × 67.8 mm ( 7.89"×3.07"×2.67" )
Weight	500 g	505 g	505 g	636 g

## Full Color 1024x768 HD OLED Display

With enhanced colour rendering, it offers highly contrasted image, allowing more comfortable and precise observation.

## Hot Tracking Mode

In hot tracking mode, the warmest source in the image is framed with a red square. Finding heat sources in densely overgrown areas and tracking them are therefore easier.

## Four Color Palettes

The device supports four color modes-White Hot, Black Hot, Red Hot, and Fusion for different observation scenes. You can choose the settings that best fits your needs

GH25 · GH35 · GQ35  
GH25L · GH35L · GQ35L · GQ50L



Thermal Monocular

# GRYPHON

IMAGE  
REVOLUTION

GRYPHON | GRYPHON LRF

# All-in-one Design Meet the Needs of All-day & All-weather Observation

With integrated thermal and night vision, considering both the daytime and the nighttime, for quick search and target identification.



Night Vision



Thermal



GQ50L

GH35/GQ35 GH35L/GQ35L

## Outstanding Image Algorithm

Self-developed image algorithm optimizes image quality, bringing users a high-definition and cleaner picture, highlighting the edge of the object.



High Definition



Sharpen Edge



Clean & Clear

## Ultra Long Detection Range

With the advanced imaging sensor and large-focus objective lens, GRYPHON series provides incredible detection capabilities.



2600 m

DETECTION RANGE



12  $\mu$ m

IMAGING SENSOR



35 mK

NETD

# Advanced Technology

## 01. Build-in Precision Laser Rangefinder

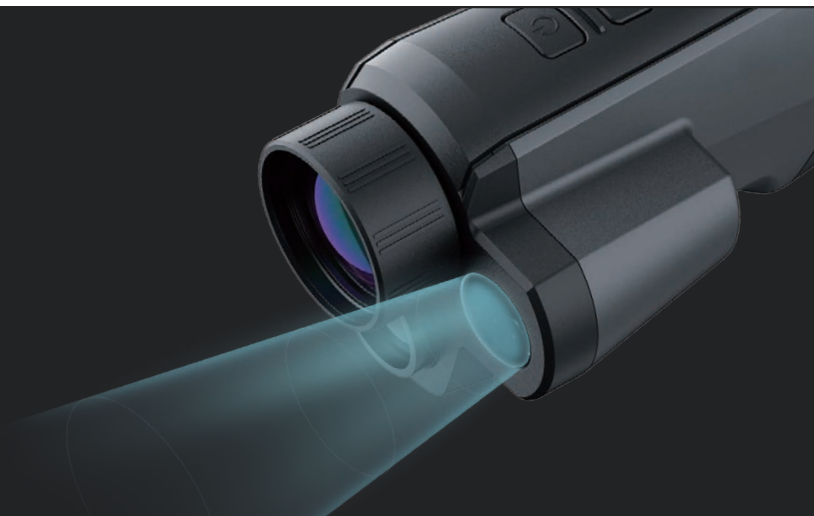
The integrated laser rangefinder allows to determine the distance in various scenarios, which play an important role in precision shooting.

Range up to

**600<sub>m</sub>**

Accuracy of

**± 1<sub>m</sub>**



## 02. Replaceable Battery

Two batteries and HIKMICRO external battery charger are included in the package box, which give the freedom to observe as long as needed even a full day.



## 03. New Way to Control

The wheel is used for menu selection and zooming, making the operation more natural.





## Ergonomic Design

The grip of the device is covered with lychee pattern leather, and the rounded transitional design provides a comfortable grip and an excellent operating experience.



## Large OLED Display

High resolution 0.39" 1024x768 OLED is capable of lower power consumption, wider viewing angle, and richer color, providing a better observation details.



## 6 Image Modes

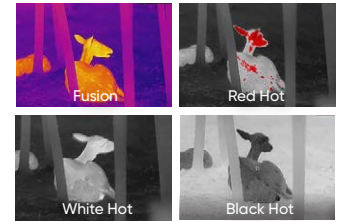
GRYPHON series provides 6 image modes for different scenarios.



Night Vision



Image Fusion



	GRYPHON LRF				GRYPHON		
	GH25L	GH35L	GQ35L	GQ50L	GH25	GH35	GQ35
Thermal Sensor	384×288, 12 μm		640×512, 12 μm	640×512, 12 μm	384×288, 12 μm		640×512, 12 μm
NETD	< 35mK				< 35mK		
Lens	25 mm, F1.0	35 mm, F1.0	35mm, F1.0	50mm, F1.2	25 mm, F1.0	35 mm, F1.0	35mm, F1.0
Magnification	2.4-19.1, 8x	3.4-26.8, 8x	2.0-16.0, 8x	2.9-23.2, 8x	2.4-19.1, 8x	3.4-26.8, 8x	2.0-16.0, 8x
FOV	10.5°×7.9°	7.5°×5.7°	11.0°×8.8°	8.78° × 7.03°	10.5°×7.9°	7.5°×5.7°	11.0°×8.8°
Visible Camera	1/2" Progressive Scan CMOS, 1920×1080				1/2" Progressive Scan CMOS, 1920×1080		
Laser Rangefinder	Wavelength: 905 nm, Measurement range: up to 600 m, Accuracy: ±1 m				N/A		
Display	0.39-inch, 1024×768 OLED				0.39-inch, 1024×768 OLED		
Operating Time	Up to 6 h		Up to 4.5 h	Up to 4.5 h	Up to 6 h		Up to 4.5 h
Detection Range	1200 m	1800 m	1800 m	2600 m	1200 m	1800 m	1800 m
Operating Temp.	-30°C to 55°C [-22°F to 131°F]				-30°C to 55°C [-22°F to 131°F]		
Weight	510 g	510 g	510 g	548 g	480 g	480 g	480 g

TH25 · TH35 · TE19 · TE25 · TQ35 · TQ50

 HIKMICRO

Thermal Scope

# THUNDER & THUNDER PRO

17 $\mu$ m  
THUNDER

12 $\mu$ m  
THUNDER Pro

## High Image Quality & Accurate Target Recognition

The powerful VOx 12 $\mu$ m imaging sensor with NETD<35mK and large aperture F1.0 lens ensure the perfect distinction of the target and present clear and detailed pictures even in complete darkness. 50 fps full frame delivers smooth video of dynamic scenes.



IMAGING SENSOR



NETD



8x

### 01. Outstanding Image Algorithm

Self-developed image algorithm optimizes image quality, bringing users a high-definition and clearer picture, highlighting the edge of the object.

### 02. Variable Digital Zoom

Digital zoom up to 8x enables better focus on small target from a greater distance.



TQ50

TH25/TH35/TE19/TE25/TQ35



## Reliability and Stability

The main body of the machine is made of high-strength plastic. The internal components are designed with precise reinforced articulation. The rail is made of 7075 aluminum alloy to ensure the high shock resistance, no deformation and no dry cracks.

### 01. IP67 Waterproof Rated

IP67 rated design creates protection from the rain, snow, even when it drops into 1 meter of the water up to 30 minutes.

### 02. High Shock Resistance

Metal housing rugged components provides high shock resistance up to 750 g/ms on larger calibers up to .375 H&H, 12-gauge and 9.3x64.



2600 m

## Ultra Long Detection Range

With the advanced imaging sensor and large-focus objective lens, THUNDER Pro series provides incredible detection capabilities, and can detect a 1.7m target at a distance up to 2600m.



	THUNDER		THUNDER Pro			
	TH25	TH35	TE19	TE25	TQ35	TQ50
Image Sensor	384×288, 17 μm		256×192, 12 μm		640×512, 12 μm	640×512, 12 μm
Frame Rate	50Hz		25Hz		50Hz	50Hz
Lens	25 mm, F1.0	35 mm, F1.0	19 mm, F1.0	25mm, F1.0	35 mm, F1.0	50 mm, F1.0
Magnification	1.5 - 12.0, 8x	2.2 - 17.6, 8x	2.5 - 20.0, 8x	3.3 - 26.4, 8x	1.8-14.4, 8x	2.6 - 20.8, 8x
FOV	14.9°×11.2°	10.0°×8.0°	9.2°×6.9°	7.0°×5.2°	12.5° x 10.1°	8.7°×7.0°
Eye relief	45mm		45mm		45mm	
Display	0.39-inch, 1024 × 768 OLED		0.39-inch, 1024 × 768 OLED			
Detection Range	900m	1300 m	1000 m	1200 m	1800 m	2600 m
Operating Time	4 h		4.5 h		3.25 h	
Weight	410 g	420 g	410 g	410 g	420 g	490 g
Operating Temp.	-20°C to 55°C (-4°F to 131°F)		-20°C to 55°C (-4°F to 131°F)			



SH35 · SH50 · SQ35 · SQ50



**NEW**

Thermal Scope

**STELLAR**

## Highlights Capturing

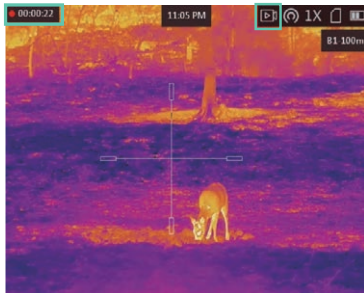
The pre-recording function will be activated after senses the recoil, it will record the 7 seconds prior to your shot and 7 seconds after your shot, to create a 14 seconds video with audio.



Recoil-activation  
Recording



Audio  
Recording

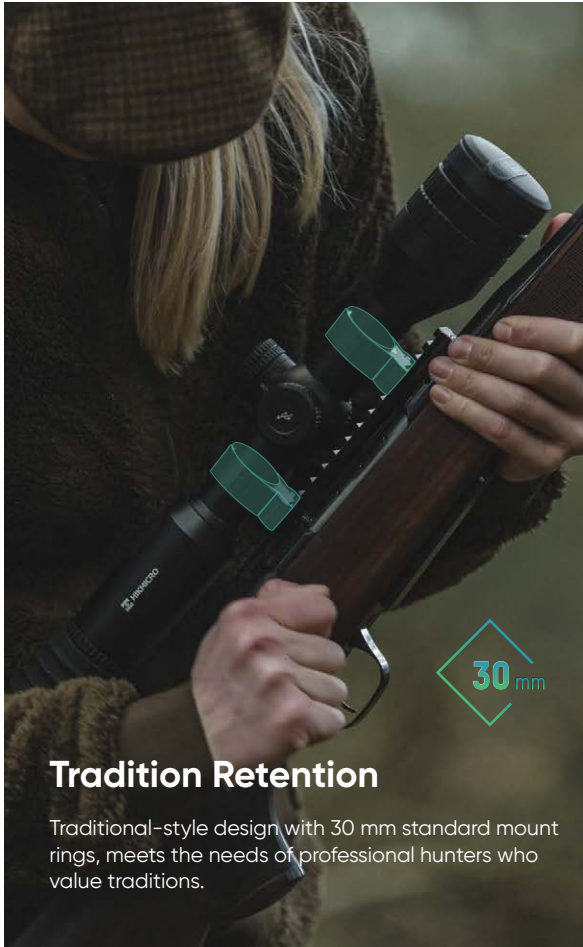


**up to 15h**  
active use

**15h**

### Ultra Low Power Consumption

Over 15 hours of active use. No more lost exciting moments due to drained batteries.



## Tradition Retention

Traditional-style design with 30 mm standard mount rings, meets the needs of professional hunters who value traditions.

## Multiple Reticle Profiles

5 Reticle Groups | 4 Colors ■ □ ■ ■ | 5 Reticle Types

## Precision Shooting

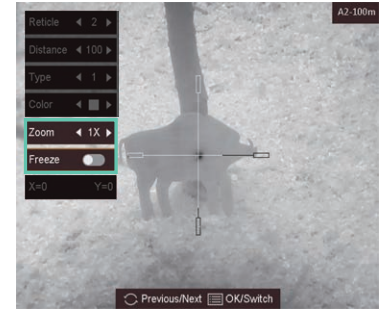
Zeroing with "Freeze" & "Zoom", improve the shooting accuracy.



Zoom

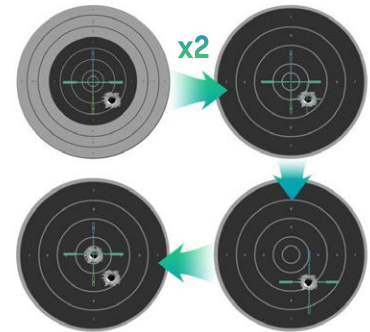


Freeze



## One Shoot Zeroing

Zeroing the scope by marking the offset on the reticle after the first shot. Five zeroing profiles are configurable for different distances.





## Ultra Long Detection Range

With the advanced imaging sensor and large-focus objective lens, STELLAR series provides incredible detection capabilities, and can detect a 1.7m target at a distance up to 2600m.

	SH35	SH50	SQ35	SQ50
Image Sensor	384×288, 12 μm		640×512, 12 μm	
NETD	< 35mK	< 35mK	< 35mK	< 35mK
Frame Rate	50Hz	50Hz	50Hz	50Hz
Lens	35 mm, F1.0	50 mm, F1.0	35 mm, F1.0	50 mm, F1.0
Magnification	2.7x	3.85x	1.62x	2.31x
FOV	7.53° x 5.65°	5.28° x 3.96°	12.52° x 10.03°	8.78° x 7.03°
Detection Range	1800 m	2600 m	1800 m	2600 m
Display	0.39-inch, OLED, 1024 × 768			
Eye Relief	60 mm			
Recoil Resistant	1000 g	1000 g	1000 g	1000 g
Battery Type	Two rechargeable Lithium batteries (internal) and one replaceable CR123A (external)			
Operating Time	Up to 15 h		Up to 13 h	
Weight	890 g	970 g	890 g	970 g
Protection Level	IP67	IP67	IP67	IP67
Operating Temp.	-30°C to 55°C (-22°F to 131°F)			



PH35L · PH50L · PQ35L · PQ50L



Thermal Scope

# PANTHER LRF



## Class-Leading Image Quality & Accurate Target Recognition

The powerful VOx 12 $\mu$ m imaging sensor with NETD<35mK and large aperture F1.0 lens ensure the perfect distinction of the target and present clear and detailed pictures even in complete darkness. 50 fps full frame delivers smooth video of dynamic scenes.



12  $\mu$ m

IMAGING SENSOR

35 mK

NETD

50 fps

FRAME RATE

## Ultra Long Detection Range

With the advanced imaging sensor and large-focus objective lens, PANTHER series provides incredible detection capabilities, and can detect a 1.7m target at a distance up to 2600m.



## Integrated Design and Hassle-free Operating Experience

PANTHER series adopts one-style design with compact and reasonable structure, it provides consumers with hassle-free operate experience.



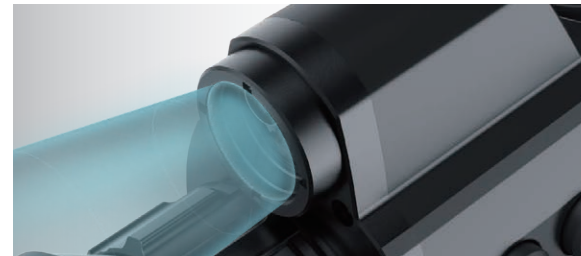
### 01. New Way to Control

The wheel design is used for menu selection and zooming. Making the operation more natural.



### 02. Built-in Precision Laser Rangefinder

The Integrated laser range finder allows the user to determine the distance in various scenarios, which is critical to precision shooting.



### 03. One Shoot Zeroing

Zeroing the scope by marking the offset on the reticle after the first shot. Five zeroing profiles are configurable for different distances.

### 04. High Shock Resistance

Metal housing rugged components provides high shock resistance up to 750 g/ms on larger calibers up to .375 H&H, 12-gauge and 9.3x64.

### 05. IP67 Waterproof Rated

IP67 rated design creates protection from the rain, snow, even when it drops into 1 meter of the water up to 30 minutes.



### 06. Replaceable and Rechargeable Battery

Two batteries and HIKMICRO external battery charger are included in the package box, which give the freedom to observe as long as needed even a full day.



	PH35L	PH50L	PQ35L	PQ50L
Image Sensor	384×288, 12 μm		640×512, 12 μm	
Frame Rate	50Hz		50Hz	
Lens	35 mm, F1.0	50 mm, F1.0	35 mm, F1.0	50 mm, F1.0
Magnification	3.1 - 24.8, 8x	4.4 - 35.2, 8x	1.9 - 15.2, 8x	2.6 - 20.8, 8x
F0V	7.6°×5.7°	5.3°×4.0°	12.5°×10.1°	8.8°×7.1°
Eye Relief	45 mm		45 mm	
Display	0.39-inch, OLED, 1024 × 768		0.39-inch, OLED, 1024 × 768	
Detection Range	1800 m	2600 m	1800 m	2600 m
Laser Rangefinder	Wavelength: 905 nm, Measurement range: up to 600 m, Accuracy: ±1 m			
Operating Time	6 h		5 h	
Weight	518 g	585 g	518 g	585 g
Operating Temp.	-30°C to 55°C (-22°F to 131°F)		-30°C to 55°C (-22°F to 131°F)	

TH35C · TE19C · TH35PC · TQ35C · TQ50C

Thermal Clip-on

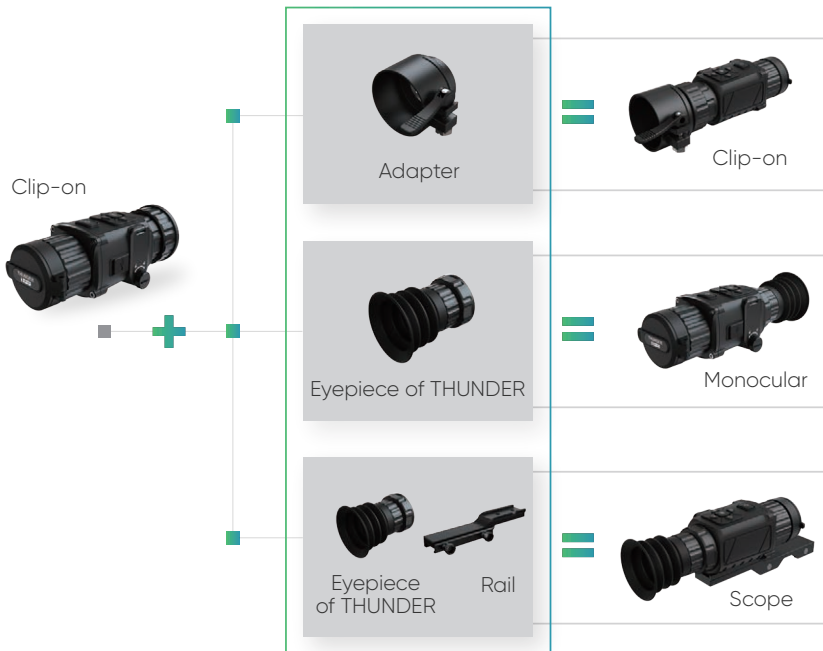
# THUNDER & THUNDER PRO

17 $\mu$ m  
THUNDER

12 $\mu$ m  
THUNDER Pro

## Multi-use Flexible Transformation

Replaceable eyepiece provides an easy and quick way to transform the clip-on to the monocular or scope.



Optional Accessories



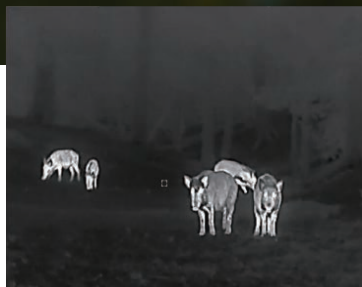
### Ultra Long Detection Range

With the advanced imaging sensor and large-focus objective lens, THUNDER Pro series provides incredible detection capabilities, and can detect a 1.7m target at a distance up to 2600m



## High Image Quality & Accurate Target Recognition

The powerful VOx 12 $\mu$ m imaging sensor with NETD<35mK and large aperture F1.0 lens ensure the perfect distinction of the target and present clear and detailed pictures even in complete darkness. 50 fps full frame delivers smooth video of dynamic scenes.



IMAGING SENSOR



NETD



FRAME RATE

### 01. Outstanding Image Algorithm

Self-developed image algorithm optimizes image quality, bringing users a high-definition and clearer picture, highlighting the edge of the object.

### 02. Central Display Menu

After being assembled with the day scope, the content of the menu will not be obstructed, providing a user-friendly operate experience of menu selection.



## Reliability and Stability

The main body of the machine is made of high-strength plastic. The internal components are designed with precise reinforced articulation.

TH35C/TE19C/TH35PC/TQ35C



### 01. IP67 Waterproof Rated

IP67 rated design creates protection from the rain, snow, even when it drops into 1 meter of the water up to 30 minutes.

### 02. High Shock Resistance

Metal housing rugged components provides high shock resistance up to 750 g/ms on larger calibers up to .375 H&H, 12-gauge and 9.3x64.

	THUNDER		THUNDER Pro		
	TH35C	TE19C	TH35PC	TQ35C	TQ50C
Image Sensor	384×288, 17 μm	256×192, 12 μm	384×288, 12 μm	640×512, 12 μm	640×512, 12 μm
Frame Rate	50Hz	25Hz	50Hz	50Hz	50Hz
Lens	35 mm, F1.0	19 mm, F1.0	35 mm, F1.0	35 mm, F1.0	50 mm, F1.0
Magnification	1x	1x	1x	1x	1x
FOV	10.0°×8.0°	9.2°×6.9°	7.6°×5.7°	12.5°×10.1°	8.7°×7.0°
Display	0.39-inch, OLED, 1024 × 768		0.39-inch, OLED, 1024 × 768		
Eye Relief	10 mm		10 mm		
Detection Range	1300 m	1000 m	1800 m	1800 m	2600 m
Operating Time	4 h	4.5 h	4 h	3.25 h	3.25 h
Weight	420 g	410 g	420 g	420 g	490 g
Operating Temp.	-20°C to 55°C [-4°F to 131°F]		-20°C to 55°C [-4°F to 131°F]		

RH50L · RQ50L · RH50LN · RQ50LN



**NEW**

Thermal Binocular

# RAPTOR

HIKMICRO RAPTOR series is a powerful and innovative triple-sensor handheld thermal and digital night vision binocular which adopts a 12μm infrared thermal sensor with NETD < 20mK sensitivity, 2560x1440 low illumination optical sensor with built-in adjustable IR illuminator, and a precise built-in laser rangefinder up to 1000m measuring distance. It offers excellent image quality in true living color or thermal during day and night observation in adverse weather conditions with up to 2600m detection range. The binocular is mainly applied for day & night observation, hunting, hiking, searching and rescuing.



		RH50L	RQ50L	RH50LN	RQ50LN
Thermal Module	Thermal Sensor	384×288, 12 μm	640×512, 12 μm	384×288, 12 μm	640×512, 12 μm
	NETD	<20mK (@25°C, F#=1.0)			
	Objective Lens	50 mm, F0.9			
	FOV ( H×V ), degrees/m@100m	5.3°×4.0° / 9.3m×7.0m	8.8°×7.0° / 15.4m×12.2m	5.3°×4.0° / 9.3m×7.0m	8.8°×7.0°/15.4m×12.2m
	Detection Range	2600 m			
Optical Module	Resolution	2560x1440			
	Objective Lens	31 mm, F1.2			
	Min. Illumination	0.001 lux @ (F1.0 , AGC On)			
	IR Illuminator Wavelength	850nm		940nm	
	FOV ( H×V ), degrees/m@100m	10.3°×7.7° / 18.0m×13.5m			
Display	Display	0.39 inch, OLED, 1024 ×768			
	Magnification	Thermal: 5.7x, Optical:2.9x	Thermal: 3.4x, Optical:2.9x	Thermal: 5.7x, Optical:2.9x	Thermal: 3.4x, Optical:2.9x
	Image mode	Digital Zoom: up to 8x			
Battery	Power supply	Optical mode (Day/Night/Auto/Defog Mode) ,Thermal mode (White Hot/Black Hot/Red Hot/Fusion), Image Fusion			
	Laser Rangefinder	Battery Type: Replaceable and rechargeable Li-ion battery, Type-C interface. Operating time: >8h			
Function	Laser Rangefinder	1000m measuring distance(± 1m measurement accuracy)			
	Other Features	PIP, GPS, DMC, Local Album, hotspot, video & photo recording			
General	Operating Environment	Operating Temperature: -30°C - +55°C. Protection Level: IP67			
	Weight	< 1.35kg			
	Dimension	217.5 mm*155 mm*87.5 mm			

A50T · A50TN



**NEW**

Night Vision Scope

**ALPEX**

Viewing beyond Color



## Born for Low-light Hunting

The unique 1/1.8-inch sensor and 3D DNR image algorithm provide clarity images even in low light conditions of 0.001 Lux, helping you to find clear and detailed targets even in the dark starry sky.



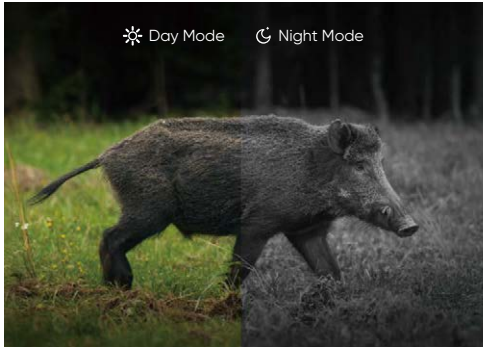
SENSOR



IMAGE RESOLUTION



OLED DISPLAY



## See What You See

High SNR and purple fringing correction algorithm can reduce the interference of abnormal noise on the edge of the image, which helps image and detail restoration. In the daytime, even from morning to twilight, when the human eye cannot recognize details of targets, ALPEX improves your ability to identify targets.

## Strong Battery Life

Up to 12 hours of battery life on a single charge.



# Easy and Customized Hunting in Our Settings

## 01. Precise and Simple Zeroing

Zeroing with "Zoom" & "Freeze", improve the shooting accuracy.



Zoom

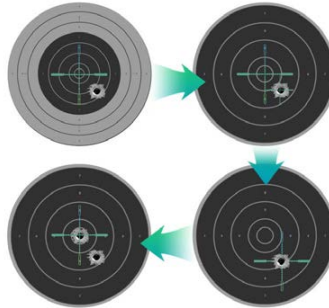


Freeze



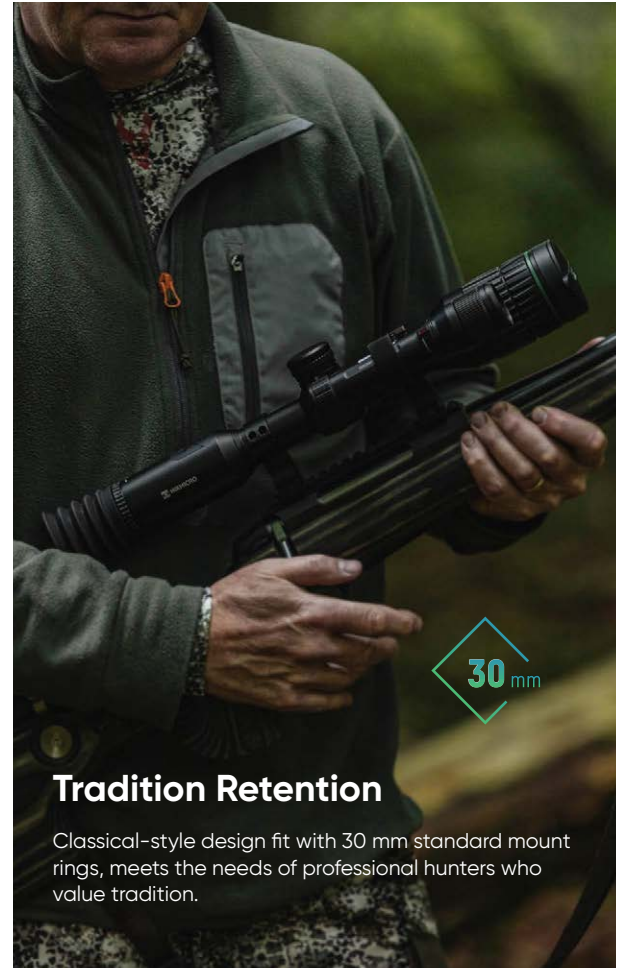
## 02. One Shoot Zeroing

Zeroing the scope by marking the offset on the reticle after the first shot. Five zeroing profiles are configurable for different distances.



## 03. Multiple Reticle Profiles

5 Reticle Groups | 5 Reticle Types | 7 Colors



## Tradition Retention

Classical-style design fit with 30 mm standard mount rings, meets the needs of professional hunters who value tradition.



## More Advantages



Detection range up to 600 m



IP 67 waterproof rated



"Picture-in-Picture" mode



Image defog technology



Operating temperatures:  
-30°C to 55°C (-22°F to 131°F)

	A50T	A50TN
Max. Resolution	1920 × 1080	
Lens (Focal Length)	50 mm	
Aperture	F1.2	
Magnification	3.5×	
Eye Relief	60 mm	
Display	1024 × 768, 0.39 inch, OLED	
Max. Recoil	1000 g	
Image Mode	Day, Night	
Digital Zoom	1×, 2×, 4×	
Recoil-activation Recording	Yes	
Audio Recording	Yes	
Standby Mode	Yes	
Wi-Fi Hotspot	Yes, HIKMICRO Sight APP	
Weight	1062 g without eyepiece and CR123A	
Wavelength for IR Torch	850nm	940nm

C32F-S · C32F-SL · C32F-SN · C32F-SNL

HIKMICRO  
CHEETAH Series C32F

**NEW**

Night Vision Scope

# CHEETAH | Transform the Darkness

## Quickly Spot Targets from Early Daytime to Starry Night

This powerful night vision camera captures any object in great detail with its 2560x1440 (3.6MP) UHD resolution.

## Compact yet Powerful

Plug and play no further accessories needed, CHEETAH is designed to be a perfect portable hunting partner. This device weighs less than 477g and has improved functions.

## Precise and Simple Zeroing

Zeroing with Zoom & Freeze function, improves shooting accuracy. Support one shoot zeroing.



## Multiple Modes Available

The day/night/auto/defog mode allows you to use cheetah in different lighting conditions. Due to a special optical component, it has an increased ability to detect IR information in fog, ensuring 24/7 observation.

## Improved Software, Easy to Use

- ◆ Smart IR function. The built-in adjustable IR emitter allows you to use the device in total darkness! (Optional for 850nm or 940nm)
- ◆ Built-in Laser Range Finder, up to 1000m detection, allows you to determine the distance in various scenarios with great accuracy. (Available for specific models)

## Replaceable and Rechargeable Battery

Two batteries and a hikmicro external battery charger are included in the package, Which gives the freedom to observe as long as needed even for a full day.

	C32F-S	C32F-SL	C32F-SN	C32F-SNL
Max. Resolution	2560x1440			
Magnification	2.6x-20.8x			
Display	1920x1080, 0.49 inch, OLED			
Eye Relief	45 mm			
Image Mode	Day/Night/Auto/Defog			
Recoil-activation Recording	Yes			
Freeze Zeroing	Yes			
Battery Operating Time	5.5hours continuous running, 2 rechargeable battery			
Laser Range Finder	/	1000 m	/	1000 m
IR Wavelength	850nm	850nm	940nm	940nm
Weight	≤ 465 g	≤ 477 g	≤ 465 g	≤ 477 g



C32F · C32F-L · C32F-N · C32F-NL  
C32F-R · C32F-RL · C32F-RN · C32F-RNL



**NEW**

Night Vision Clip-on

# CHEETAH | Transform the Darkness

## Quickly Spot Targets from Early Daytime to Starry Night

This powerful night vision camera captures any object in great detail with its 2560x1440 UHD resolution.

## Compact yet Powerful

Plug and play no further accessories needed, CHEETAH is designed to be a perfect portable hunting partner. This device weighs less than 477g and has improved functions.

## Improved Software, Easy to Use



Smart IR function. The built-in adjustable IR emitter allows you to use the device in total darkness! (Optional for 850nm or 940nm)



Built-in Laser Range Finder, up to 1000m detection, allows you to determine the distance in various scenarios with great accuracy. (Available for specific models)

## Multi-use Flexible Transformation

CHEETAH's replaceable eyepiece provides an easy and quick way to transform the clip-on to the monocular or scope.



## Multiple Modes Available

The day/night/auto/defog mode allows you to use CHEETAH in different lighting conditions. Due to a special optical component, it has an increased ability to detect IR information in fog, ensuring 24/7 observation.

	C32F	C32F-L	C32F-N	C32F-NL	C32F-R	C32F-RL	C32F-RN	C32F-RNL
Max. Resolution	2560×1440							
Magnification	1x							
Display	1920×1080, 0.49 inch, OLED							
Eye Relief	10 mm							
Image Mode	Day/Night/Auto/Defog							
Recoil-activation Recording	Yes							
Battery Operating Time	5.5hours continuous running, 2 rechargeable battery							
Protection Level	IP67							
Reticle Available	/				Yes			
Laser Range Finder	/	1000 m	/	1000 m	/	1000 m	/	1000 m
IR Wavelength	850nm	850nm	940nm	940nm	850nm	850nm	940nm	940nm
Weight	≤465 g	≤477 g	≤465 g	≤ 477 g	≤ 465 g	≤ 477 g	≤ 465 g	≤ 477 g

An aerial photograph of a vast forest during sunset. The sky is filled with dark, heavy clouds, with a bright, golden light breaking through near the horizon, creating a dramatic silhouette effect on the trees. The forest below is a mix of green and yellow, indicating the start of autumn. A large, dark evergreen tree is visible in the foreground on the left side.

# ACCESSORIES

**Apply to**  
**GRYPHON**  
**GRYPHON LRF**

HIKMICRO IR Torch/Bracket

HM-L028IR/  
HM-L128IR/  
HM-L029IR/  
HM-L129IR



**Apply to**  
**ALPEX**

HIKMICRO IR Torch Bracket

HM-IRB-A



**Apply to**  
**THUNDER**  
**THUNDER Pro**  
**PANTHER LRF**  
**CHEETAH**

HIKMICRO  
Rail

HM-THUNDER-R



HIKMICRO  
Quick-release  
Rail

HM-QR



**Apply to**  
**STELLAR**  
**ALPEX**

HIKMICRO Ring

HM-Rings-1-H35

HM-Rings-2-H29

HM-Rings-2-H35

HM-Rings-2-H43



**Apply to**  
**THUNDER**  
**THUNDER Pro**  
**CHEETAH**

HIKMICRO Adapter

HM-THUNDER-38A  
HM-THUNDER-40A  
HM-THUNDER-50A  
HM-THUNDER-62A



HIKMICRO  
Eyepiece

HM-THUNDER-E



**Apply to**  
**GRYPHON**  
**GRYPHON LRF**  
**PANTHER LRF**

HIKMICRO  
Batteries  
Charger

HM-5202AZC



HIKMICRO  
Battery

HM-3633DC



**Apply to**  
**LYNX**  
**OWL**  
**GRYPHON**  
**FALCON**

HIKMICRO  
Monitor Screen

HM-HS07P



HIKMICRO  
Monocular Pouch

HM-OUTDOOR-POUCH



# See the World in a New Way

HIKMICRO OUTDOOR PRODUCTS





[www.alldataee.com](http://www.alldataee.com)





© Hangzhou HIKMICRO Sensing Technology Co., Ltd.  
Building A1, No.299, Qiushi Road, Tonglu Economic Development Zone,  
Tonglu County, Hangzhou, Zhejiang


 HIKMICRO Outdoor

 HIKMICRO

 hikmicro\_outdoor

 [info@hikmicrotech.com](mailto:info@hikmicrotech.com)

 HIKMICRO Outdoor

 <http://hikmicrotech.com/en>